



<https://h1o-web.com/>

VISION



Business Overview

Small, serviced offices to meet the working needs of small groups

Our offices are small, serviced offices that meet the needs of small groups such as startups, company satellite offices (e.g. for a special project), regional or overseas company bases and freelancers.

Streamlining business and boosting productivity through utilization of technology such as IoT is indispensable to the office of the future. More importantly, however, we value the mental health and personal preferences of our tenants and seek to provide environments where workers can be happy. Our pursuit is new-era offices that conform to each occupant, maximize individual potential and support the small businesses that will transform society.

Happiness at work.

H¹O
HUMAN FIRST OFFICE



H¹O Nionbashi-Kayabacho

1 minutes' walk from Kayabacho Station (directly connected).
With good access to various metropolitan locations.

Features

We protect people and information with personal spaces that ensure privacy and comfort.

Up to 5 layers of security

Multi-layer security design prevents unauthorized entry by third parties, ensuring safety and peace of mind by protecting people and information, both important business resources.

Individual HVAC* in all rooms to optimize the environment for work

Each of the rooms is equipped with individual HVAC* to allow every occupant to always work in comfort at their favorite temperature.*Some properties may differ in specifications.



Maximum comfort and convenience by combining IoT and human staff

The future of work is here with our biometric authentication systems

Our offices utilize biometric (mainly facial) authentication to enable smooth, keyless, contactless access. This eliminates the risk of card key loss or duplication, providing comfort and safety.*Your FeliCa card may also be used as a security card.

Remote office management using IoT

Office HVAC and lighting can be controlled remotely using IoT technology. Sensors provide information on how crowded the shared lounges and restrooms are, making things even more convenient for you.



The office of your choice, for the way you want to work.

Office size and interior customizable based on needs

Choose the best room size for your number of users, adjust wall partitions and add or take away furniture as needed.

Flexible, needs-based office use

The standard fixed-term building lease agreement is two years (which may be terminated early with three months' notice) but we offer contracts as short as three months for projects. The rental offices and common areas are also accessible 24 hours a day, 365 days a year (excluding mandatory i



An environment where workers can be happy, that supports individual mental health.

Common areas for tenants intent on working

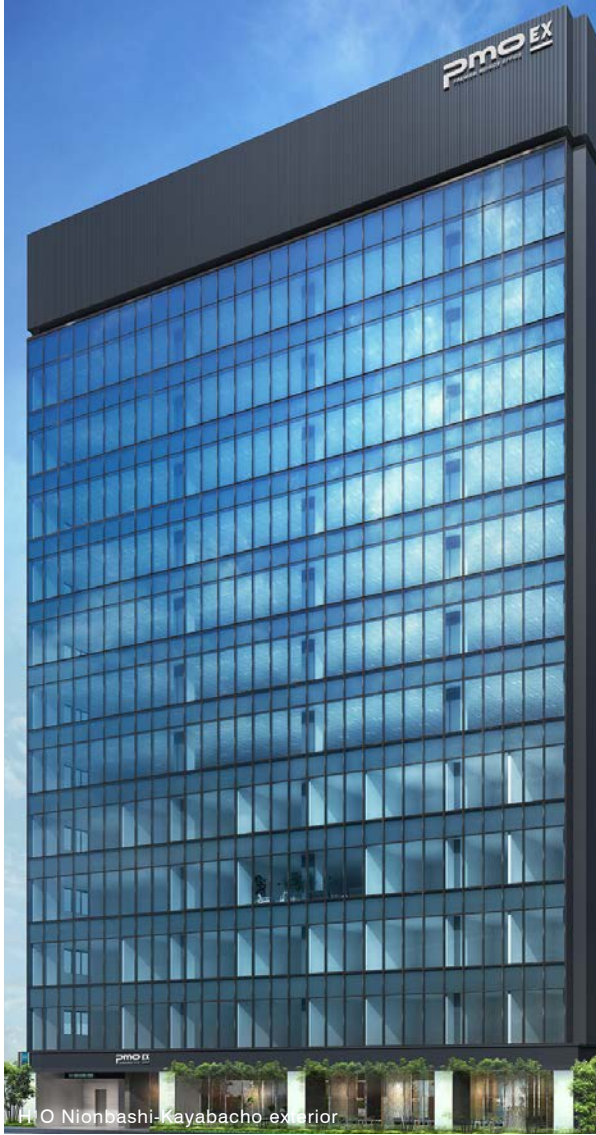
The common areas are designed to help workers switch on and off. Aromatic ventilation and showers provide a place to rejuvenate.*Some properties do not have showers.

Extensive soft services that stimulate the five senses

Tenant-only exercise and healthy food services support individual mental health. We also have plans for various trainings and events.



About



Convenient 1-minute walk from Kayabacho Station on the Tokyo Metro Hibiya Line and Tozai Line

*Scheduled to be directly connected to the station in 2024

Access to three stations and five lines is available, including to the Tokyo Metro Hibiya Line and Tozai Line, as well as the JR Keiyo Line. A 4-minute walk from Hatchobori Station and an 8-minute walk from Nishinomiya Station, this favorable and dynamic location supports business growth.



Comfortable access to the rest of Japan with Otemachi (Tokyo) Station just two stations and two minutes away

Otemachi (Tokyo) Station is only a 6-minute taxi ride away. This helps make long-distance travel more efficient, such as using the Shinkansen bullet train.

*According to NAVITIME website



Two lounges for different purposes provide activity-based working spaces in the building

There are two lounges that can be used for different purposes, such as for meeting with guests, working, or taking a break. The lounges are split into zones to realize activity-based in the building.



Twelve fully equipped single-person rooms for online meetings

There are twelve single-person rooms for online meetings. Users can set up their monitor(s) and participate in online meetings without needing to worry about their surroundings.





Map

Directly connected to Kayabacho Station*1 and facilitating access to three stations and five lines.

H'IO Nihonbashi-Kayabacho boasts access to three stations and five lines, including the Tokyo Metro Hibiya Line and Tozai Line, as well as the JR Keiyo Line. Directly connected to Kayabacho Station*1, a 4-minute walk from Hatchobori Station, an 8-minute walk from Nihombashi Station, and within walking distance*2 of Tokyo Station, this favorable and dynamic location supports business growth. The Kayabacho area, which facilitates access to Tokyo Station for no more than ¥500 by taxi, serves as a Tokyo base for companies with headquarters in other prefectures and also functions as a base for startups.

*1 Scheduled to be directly connected to the station in 2024 *2 15-minute walk (approx. 1.2 km)



2-12-10 Nihonbashi Kayabacho, Chuo Ward, Tokyo

Tokyo Metro Hibiya Line and Tozai Line

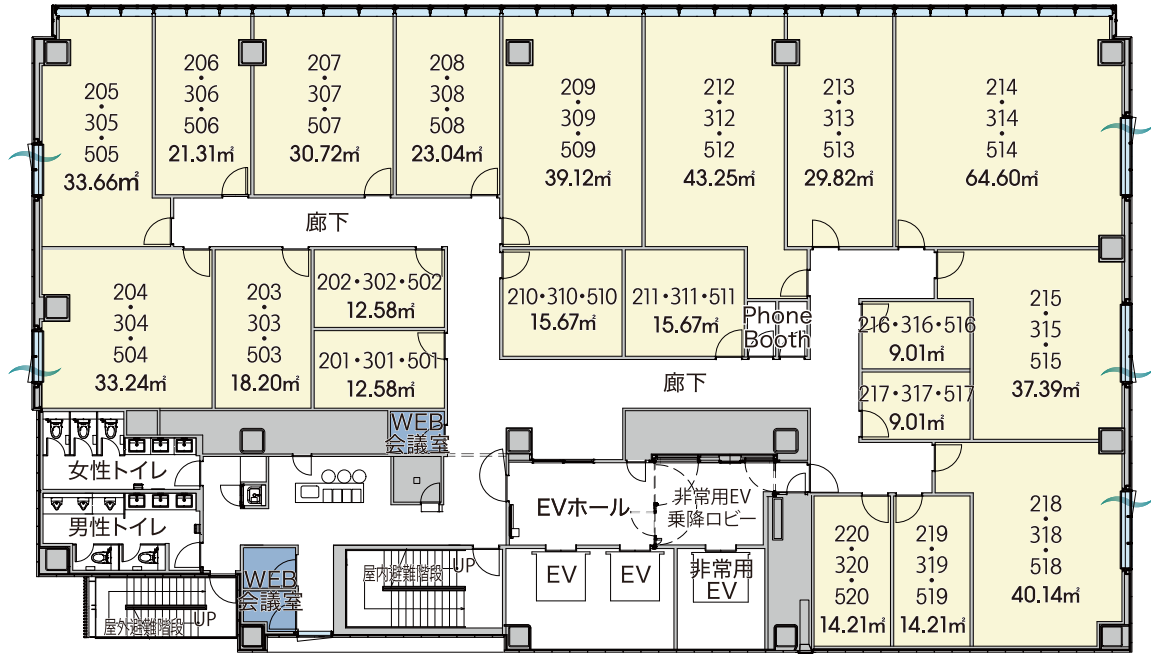
1-min walk from Kayabacho Station*

*Scheduled to be directly connected to the station in 2024

Plan

2F・3F・5F

4F(lounge floor)



| No. | 面積 (㎡) | 面積 (坪) | 登録可能人数 | No. | 面積 (㎡) | 面積 (坪) | 登録可能人数 | No. | 面積 (㎡) | 面積 (坪) | 登録可能人数 |
|-------------|--------|--------|--------|-------------|--------|--------|--------|-------------|--------|--------|--------|
| 201・301・501 | 12.58㎡ | 3.80坪 | 4名 | 208・308・508 | 23.04㎡ | 6.96坪 | 8名 | 215・315・515 | 37.39㎡ | 11.31坪 | 12名 |
| 202・302・502 | 12.58㎡ | 3.80坪 | 4名 | 209・309・509 | 39.12㎡ | 11.83坪 | 13名 | 216・316・516 | 9.01㎡ | 2.72坪 | 3名 |
| 203・303・503 | 18.20㎡ | 5.50坪 | 6名 | 210・310・510 | 15.67㎡ | 4.74坪 | 5名 | 217・317・517 | 9.01㎡ | 2.72坪 | 3名 |
| 204・304・504 | 33.24㎡ | 10.05坪 | 11名 | 211・311・511 | 15.67㎡ | 4.74坪 | 5名 | 218・318・518 | 40.14㎡ | 12.14坪 | 13名 |
| 205・305・505 | 33.66㎡ | 10.18坪 | 11名 | 212・312・512 | 43.25㎡ | 13.08坪 | 14名 | 219・319・519 | 14.21㎡ | 4.29坪 | 5名 |
| 206・306・506 | 21.31㎡ | 6.44坪 | 7名 | 213・313・513 | 29.82㎡ | 9.02坪 | 10名 | 220・320・520 | 14.21㎡ | 4.29坪 | 5名 |
| 207・307・507 | 30.72㎡ | 9.29坪 | 10名 | 214・314・514 | 64.60㎡ | 19.54坪 | 22名 | (20区画/各フロア) | | | |

Legend Meeting room Rental office Reception, lounge Ventilation

* This drawing is from the planning stage and is subject to change.

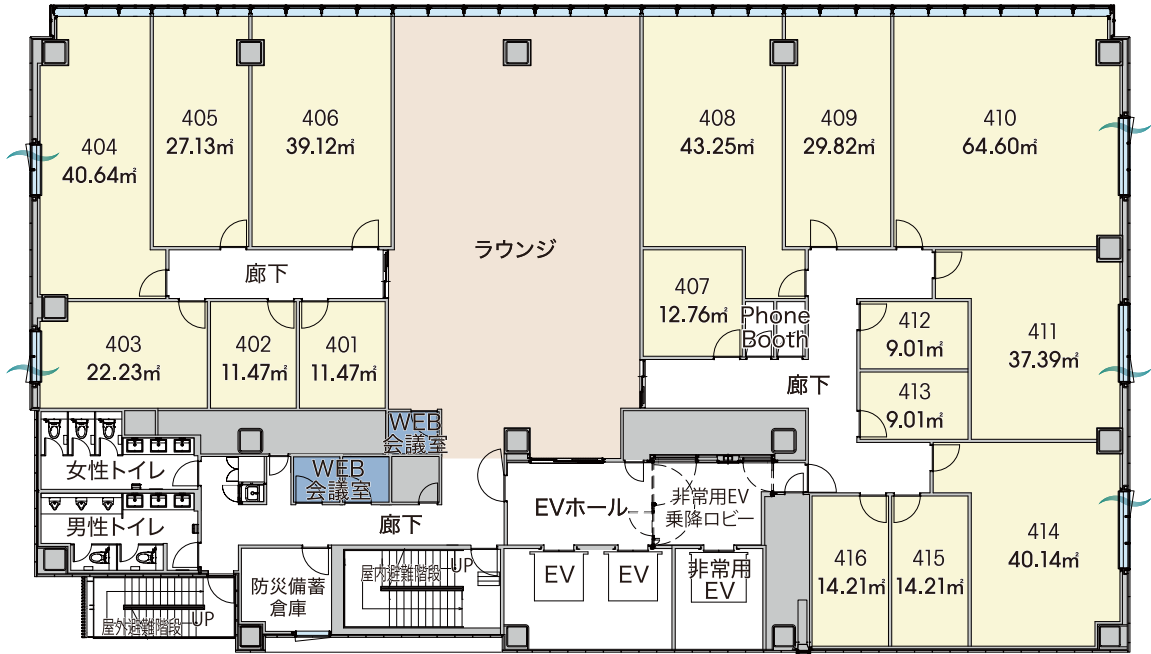
* Some of the rental office partitions are removable (consult regarding free).

* Max. registrants is the number allowed by the security system, not the number stipulated in the Office Hygiene Standards.

Plan

2F・3F・5F

4F(lounge floor)



| No. | 面積 (㎡) | 面積 (坪) | 登録可能人数 | No. | 面積 (㎡) | 面積 (坪) | 登録可能人数 | No. | 面積 (㎡) | 面積 (坪) | 登録可能人数 |
|---------|--------|--------|--------|-----|--------|--------|--------|-------------|--------|--------|--------|
| 401-402 | 11.47㎡ | 3.46坪 | 4名 | 407 | 12.76㎡ | 3.85坪 | 4名 | 412-413 | 9.01㎡ | 2.72坪 | 3名 |
| 403 | 22.23㎡ | 6.72坪 | 7名 | 408 | 43.25㎡ | 13.08坪 | 14名 | 414 | 40.14㎡ | 12.14坪 | 13名 |
| 404 | 40.64㎡ | 12.29坪 | 14名 | 409 | 29.82㎡ | 9.02坪 | 10名 | 415-416 | 14.21㎡ | 4.29坪 | 5名 |
| 405 | 27.13㎡ | 8.20坪 | 9名 | 410 | 64.60㎡ | 19.54坪 | 22名 | (16区画/各フロア) | | | |
| 406 | 39.12㎡ | 11.83坪 | 13名 | 411 | 37.39㎡ | 11.31坪 | 12名 | | | | |

Legend Meeting room Rental office Reception, lounge Ventilation

* This drawing is from the planning stage and is subject to change.

* Some of the rental office partitions are removable (consult regarding free).

* Max. registrants is the number allowed by the security system, not the number stipulated in the Office Hygiene Standards.

SERVICES

Basic Services (included in rental fee)

Staffed reception service

(weekdays 9:00-18:00)



Reception

Staff welcome visitors.



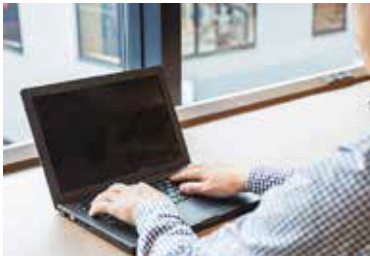
Package delivery when absent

Packages are delivered to your office even when you aren't there.

*Some items cannot be received.

Shared Spaces/Common Areas

(24/365 *Excluding mandatory inspection days)



Common area wi-fi

A wireless LAN is available in the shared lounges and meeting rooms.



Beverage service (coffee, water)

There are coffee and water machines in the shared lounges.



Equipment rental service

Cables, connectors, etc. are available for meetings.



Document dissolution service

A shared document dissolution service is available.



Aroma

H1O original aroma machines are installed at the entrances.



Guest use of shared lounges

Groups of up to four people may use the shared lounges for one hour free as guests.

*Must be accompanied by a tenant. 400 yen per 15 minutes past one hour.

Private Spaces/Rental Offices

(24/365 *Excluding mandatory inspection days)



Room cleaning

The rental offices are cleaned (floors cleaned once a week, garbage collected five times a week).

Utility fees included

Fees for water and electricity are all included in the rent.



Individual HVAC in all rooms

Individual HVAC systems allow everyone to work at their preferred temperatures.

*Some properties may differ in specifications.

Corporation registration for rental office tenants

Rental office tenants can register as corporations.



Extension telephones

Reception and the rental offices are connected by telephone.

Other

(24/365 *Excluding mandatory inspection days)



Keyless security using biometric authentication

Security systems use facial or fingerprint recognition.

*IC cards can also be used.



Remote control using IoT

Office HVAC and lighting can be controlled remotely and how crowded the shared lounges, restrooms and other common areas are can be visualized.



Healthy food service

Wellness-conscious breakfasts and lunches will be provided as needed.



Tenant interaction

Events for tenants to interact will be planned regularly.



Company nameplate display

You can display your company's name at the entrance.

Optional Services (not included in rental fee)

Shared Spaces/Common Areas



Meeting rooms

Meeting rooms are reserved in 15-minute increments

*Monitors and whiteboards are free.

1 person: 250 yen/15 min

4 people: 800 yen/15 min

6 people: 900 yen/15 min

8 people: 1,000 yen/15 min

10 people: 1,100 yen/15 min



Multifunction machines

Combination printer-copier-scanners are available for use.

B&W: 10 yen/sheet, color: 30 yen/sheet, scan: free



Tea service

Tea can be served to the meeting rooms (water, tea, coffee: 150 yen per bottle)

Private Spaces/Rental Offices



Optional furniture

Rental offices can be furnished with our designated furniture.

*Consult regarding fees.

Movable wall partitions

These can be removed to accommodate more people.

*Consult regarding fees.

Dedicated internet lines

Tenants can run LAN lines into their rental offices.

Corporation registration for joint tenants

One joint tenant per office; 10,000 yen per month to register.

*There is a screening process for joint tenants.

Other



Training services

New employee training, management training, etc. will be offered as needed.

*Taxes such as consumption tax are not included in the usage fees.

*Please note that services are subject to change.

T&Cs

Contract Terms and Conditions

| | |
|---------|------------------------------|
| Parties | Corporations and individuals |
|---------|------------------------------|

| | |
|------|-------------------------------------|
| Type | Fixed-term building lease agreement |
|------|-------------------------------------|

| | |
|--------|--|
| Period | 24 months (terminable early with 3 months' notice) |
|--------|--|

| | |
|-------------|-----------------------------------|
| Initial fee | Administrative fee: 1 months' fee |
|-------------|-----------------------------------|

| | |
|-------------|--|
| Monthly fee | Calculated by number of days from usage start date |
|-------------|--|

*In principle, we ask tenants to sign a guarantor agreement with our designated guarantor (for a separate guarantor fee).

*Please consult regarding a deposit.

Recontract fee: 1 month's fee

Usage Fees



Max. registrants: 2

*Rates vary by property and office.
*All private offices, 24/7 access, biometric authentication security system and individual HVAC



Max. registrants: 8

*Rates vary by property and office.
*All private offices, 24/7 access, biometric authentication security system and individual HVAC



Max. registrants: 13

*Rates vary by property and office.
*All private offices, 24/7 access, biometric authentication security system and individual HVAC

- Max. registrants is the number allowed by the security system, not the number stipulated in the Office Hygiene Standards.
- Contact us for details of the sections and fees.

Contract Process

1
Reserve a visit

Please inform us of your preferred date to visit.
*Visits may be scheduled between 10:00 and 17:00 on weekdays.

By email

Contact us >

We will respond between 9:00 and 17:40 excluding Saturdays, Sundays and holidays.

2
Apply

Please prepare the required documents and apply. We will evaluate your application and interview you.
*Please note that based on the evaluation, we may not be able to fulfill your preferences.

Required Documents

Applying as a corporation
-Application form
-Company overview (that explains your business and shareholder composition)
-Company seal registration certificate (no older than three months)
-Certificate of Full Registry Record (no older than three months)
-Copy of representative ID (photo ID such as driver's license, passport, etc.)
-Financial statement (two periods; detailed)

Applying as an individual
-Application form
-Copy of ID (photo ID such as driver's license, passport, etc.)
-Seal registration certificate (no older than three months)
-Certificate of Residence (no older than three months; domicile omitted)
-Resumé
-Income statement (Tax Certificate slip, Tax Payment Certification, etc.)

*In some cases, we may require additional documents.

3
Sign contract and pay

We will notify you of the evaluation results a few days after you submit the required documents. If successful, the contract date and move-in date will be decided. The contract starts after we receive the initial payment.

Initial Fee

Administrative fee: 1 months' fee
Monthly fee: Calculated by number of days from usage start date

*In principle, we ask tenants to sign a guarantor agreement with our designated guarantor (for a separate guarantor fee).
*Please consult regarding a deposit.
*Please note that based on the evaluation, we may not be able to fulfill your preferences.

4
Receive office and move in

Once the contract process is complete, you will receive a facility explanation and security registration and can begin using your office.

*The usage fees above do not include consumption tax, etc.

*Please note that services are subject to change.

Outline

| | |
|--|--|
| Address | 2-12-10 Nihonbashi Kayabacho, Chuo Ward, Tokyo |
| Access | 1-minute walk from Kayabacho (Exit 1; Tozai Line and Hibiya Line) 4-minute walk from Hatchobori (Exit A3; Hibiya Line) 8-minute walk from Nihombashi (Exit D1; Tozai Line) |
| Design | Nomura Real Estate Development Co., Ltd. |
| Construction | Nomura Real Estate First-Class Architect Office |
| Landlord | Tokyu Construction Co., Ltd. |
| Interior design supervision | Takashimaya Space Create Co., Ltd. (Lounges on 1F & 4F, common space on 2F to 5F) |
| Completion | Mid-July 2022 (Scheduled) |
| Purpose | Office |
| Structure/size/ H¹O floors | floors Steel frame (Concrete-filled steel tubes) 12 floors above ground, 1 below 2nd to 5th floors |
| No. of sections | 76 |
| Office sizes | 9.01 m ² - 64.60 m ² |
| Ceiling height | Offices (2 to 5F): 2,750 mm Entrance hall and first floor lounge: 3,500 mm Some sections 3,300 mm |
| Floor wiring | Raised floor (H = 100 mm) |
| Capacitance | 6, 10, or 15 kVA per section |
| HVAC | Air-cooled heat pump (individually controlled) |
| Lighting | LED lights (entrance and office floors) |
| Elevators | Standard: 2 (capacity: 15) Emergency: 1 (capacity: 17) |
| Optical cables | Led into rental offices |
| Security | Automated security (24 hours), biometric authentication on 1st floor, at elevator halls on each floor, and office entrances |
| Power supply | 2-line supply from different substations |
| Shared equipment | Terrestrial digital, BS, CS (110°) available |
| Hours | 24-hour access, no holidays (excluding mandatory inspection days) |
| Development style | By floor |

*This information is based on the plan and may be subject to change.

* Walking times are calculated assuming a pace of 80 meters per minute.

* Times are for regular daytime and do not include transfer or wait time. In addition, walking times are based on the distance from the station building or subway surface exit, not the ticket gates.

* This information is current as of March 2022.