



<https://h1o-web.com/>

VISION



Business Overview

Small, serviced offices to meet the working needs of small groups

Our offices are small, serviced offices that meet the needs of small groups such as startups, company satellite offices (e.g. for a special project), regional or overseas company bases and freelancers.

Streamlining business and boosting productivity through utilization of technology such as IoT is indispensable to the office of the future. More importantly, however, we value the mental health and personal preferences of our tenants and seek to provide environments where workers can be happy. Our pursuit is new-era offices that conform to each occupant, maximize individual potential and support the small businesses that will transform society.

Happiness at work.

H¹O
HUMAN FIRST OFFICE



H¹O Shibuya Jinnan

Opened October 16

50 sections (11.26 m² – 52.58 m²)

7-min walk from Shibuya Station Sections available!

Features

We protect people and information with personal spaces that ensure privacy and comfort.

Up to 5 layers of security

Multi-layer security design prevents unauthorized entry by third parties, ensuring safety and peace of mind by protecting people and information, both important business resources.

Individual HVAC* in all rooms to optimize the environment for work

Each of the rooms is equipped with individual HVAC* to allow every occupant to always work in comfort at their favorite temperature.*Some properties may differ in specifications.



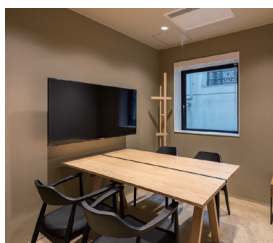
Maximum comfort and convenience by combining IoT and human staff

The future of work is here with our biometric authentication systems

Our offices utilize biometric (mainly facial) authentication to enable smooth, keyless, contactless access. This eliminates the risk of card key loss or duplication, providing comfort and safety.*Your FeliCa card may also be used as a security card.

Remote office management using IoT

Office HVAC and lighting can be controlled remotely using IoT technology. Sensors provide information on how crowded the shared lounges and restrooms are, making things even more convenient for you.



The office of your choice, for the way you want to work.

Office size and interior customizable based on needs

Choose the best room size for your number of users, adjust wall partitions and add or take away furniture as needed.

Flexible, needs-based office use

The standard fixed-term building lease agreement is two years (which may be terminated early with three months' notice) but we offer contracts as short as three months for projects. The rental offices and common areas are also accessible 24 hours a day, 365 days a year (excluding mandatory i



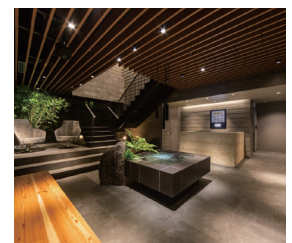
An environment where workers can be happy, that supports individual mental health.

Common areas for tenants intent on working

The common areas are designed to help workers switch on and off. Aromatic ventilation and showers provide a place to rejuvenate.*Some properties do not have showers.

Extensive soft services that stimulate the five senses

Tenant-only exercise and healthy food services support individual mental health. We also have plans for various trainings and events.



About



The heart of Shibuya culture, downtown but near nature

The Jinnan area, also called Apparel Street, is home to stylish fashion brands but also next to Yoyogi Park, offering a mix of convenience and nature unique to this city center.



Whole-building development that accentuates the surrounding nature

The building exterior, rooftop terrace, lounge spaces and other aspects use wood and plants to bring the surrounding nature into the workplace.



Attractive shared facilities that accommodate a range of work styles

From the colorful rooftop terrace to the two types of lounges, the design creates spaces for working and relaxing other than the rental offices.



Comfortable rental offices

With windows and individual HVAC in all rooms, a biometric security system, exposed ceilings and more, these offices provide comfort, freedom and inspiration.





Map

Evolving into a business hub through recent redevelopment

With streets like Park Avenue and Shibuya Center Avenue running through this new southern neighborhood, the area is truly symbolic of Shibuya. You will enjoy forefront urbanity such as shopping, dining and culture. In addition, recent major redevelopment is bringing in more offices, turning this bustling district into a business hub in addition to a shopping destination.



Tokyo Metro lines

7-min walk from
Shibuya
(Exit B1)

9-min walk from
Meiji-jingumae
(Exit 1)

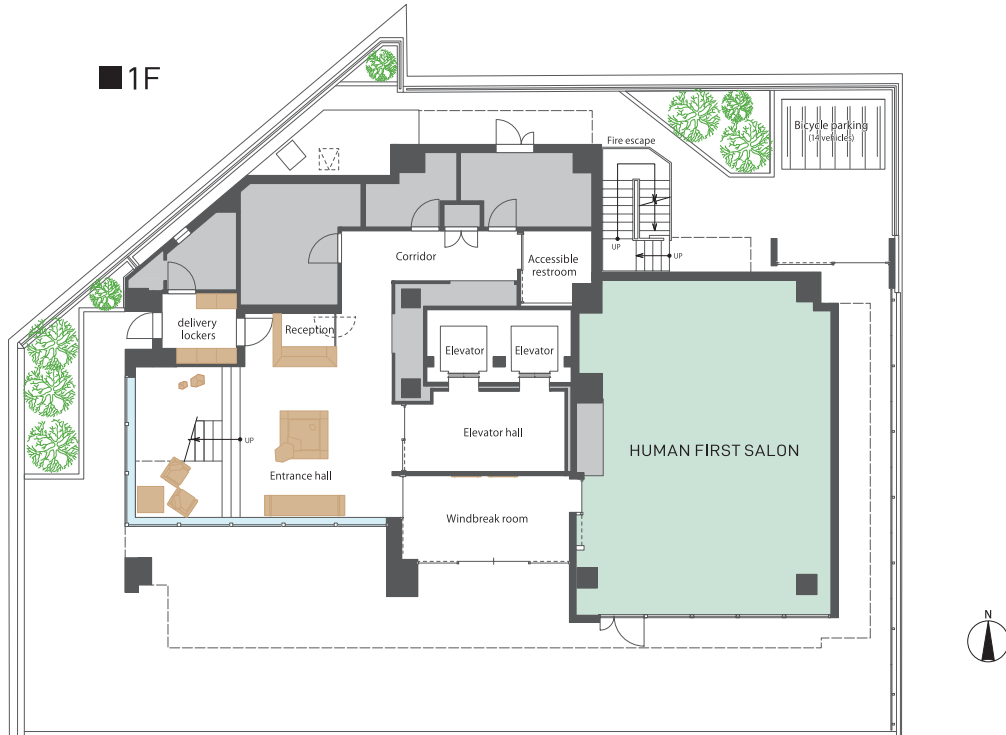
JR lines

9-min walk from
Shibuya
(Hachiko Exit)

10-min walk from
Harajuku
(West Exit)

Plan

1F	2F	3~7F	8F (lounge floor)
9F	10F		RF



■ Meeting rooms (6)

No.	Capacity
ROOM A	7
ROOM B	8
ROOM C	4
ROOM D	4
ROOM E	1
ROOM F	1

■ Meeting room
 ■ Rental office
 ■ Lounge
 ■ Shop
 ~ Ventilation

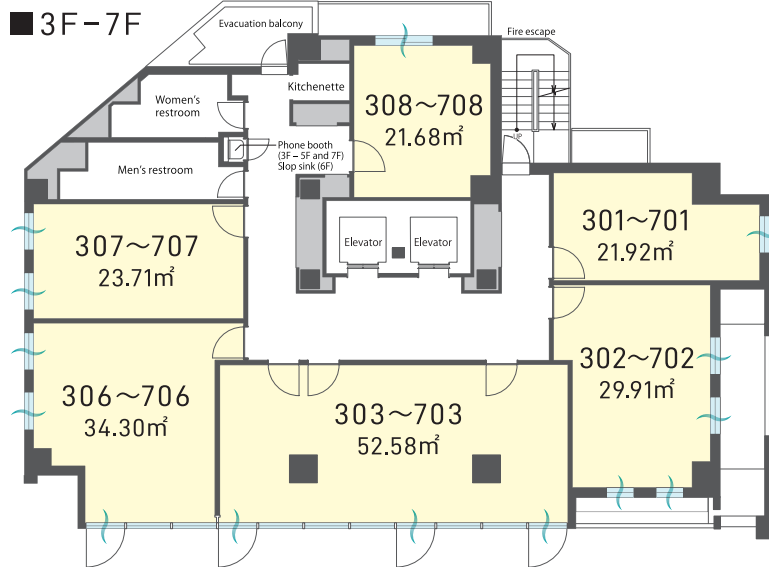
*This drawing is from the planning stage and is subject to change.

*Some of the rental office partitions are removable (consult regarding fee).

*Max. registrants is the number allowed by the security system, not the number stipulated in the Office Hygiene Standards.

Plan

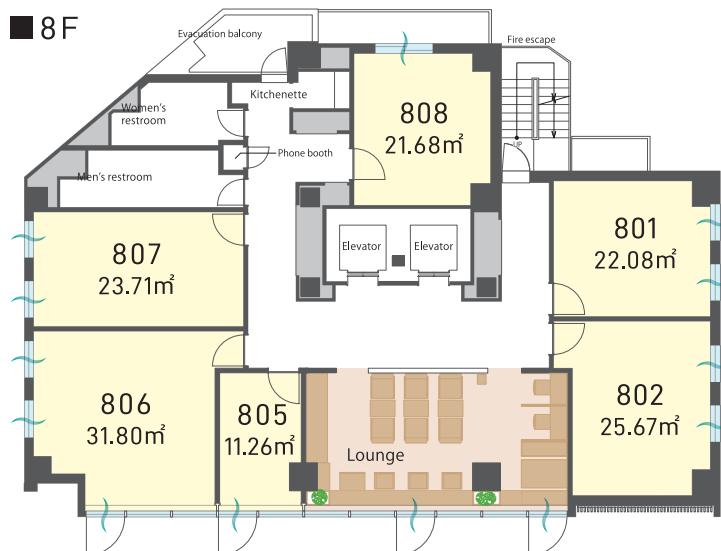
1F	2F	3~7F	8F (lounge floor)
9F	10F		RF



■ rental offices (30) *50 sections in total

No.	Area (m ²)	Max. registrants
301-701	21.92	7
302-702	29.91	10
303-703	52.58	18
306-706	34.30	11
307-707	23.71	8
308-708	21.68	7

*Rooms 303 to 703 can be divided into smaller sections (negotiable)



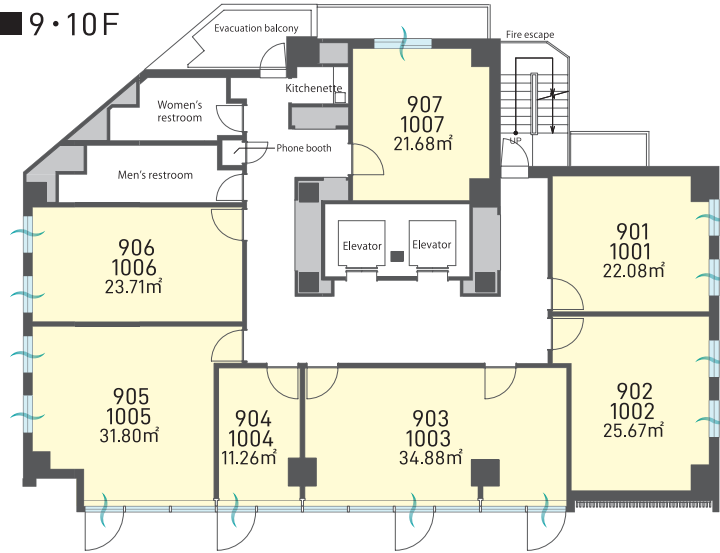
■ rental offices (6) *50 sections in total

No.	Area (m ²)	Max. registrants
801	22.08	7
802	25.67	9
805	11.26	4
806	31.80	11
807	23.71	8
808	21.68	7

Plan

1F	2F	3~7F	8F (lounge floor)
9F	10F		RF

■ 9・10F

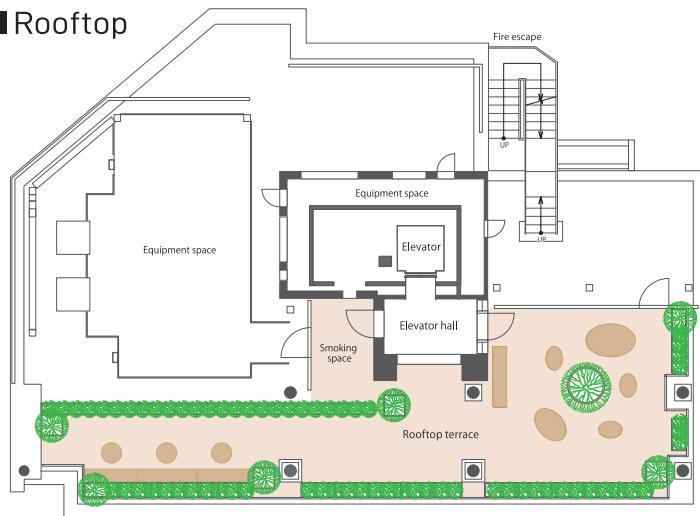


■ rental offices (14) *50 sections in total

No.	Area (m ²)	Max. registrants
901・1001	22.08	7名
902・1002	25.67	9名
903・1003	34.88	12名
905・1005	11.26	4名
906・1006	31.80	11名
907・1007	23.71	8名
908・1008	21.68	7名

*Room 903/1003 can be divided into smaller sections (negotiable)

■ Rooftop



SERVICES

Basic Services (included in rental fee)

Staffed reception service

(weekdays 9:00-18:00)



Reception

Staff welcome visitors.



Mail service

Mail is delivered to mailboxes.
*Some items cannot be received.



Package delivery when absent

Packages are delivered to your office even when you aren't there.
*Some items cannot be received.

Shared Spaces/Common Areas

(24/365 *Excluding mandatory inspection days)



Common area wi-fi

A wireless LAN is available in the shared lounges and meeting rooms.



Beverage service (coffee, water)

There are coffee and water machines in the shared lounges.



Equipment rental service

Cables, connectors, etc. are available for meetings.



Document dissolution service

A shared document dissolution service is available.



Aroma

H1O original aroma machines are installed at the entrances.



Guest use of shared lounges

Groups of up to four people may use the shared lounges for one hour free as guests.
*Must be accompanied by a tenant, 400 yen per 15 minutes past one hour.

Private Spaces/Rental Offices

(24/365 *Excluding mandatory inspection days)



Room cleaning

The rental offices are cleaned (floors cleaned once a week, garbage collected five times a week).

Utility fees included

Fees for water and electricity are all included in the rent.



Individual HVAC in all rooms

Individual HVAC systems allow everyone to work at their preferred temperatures.

*Some properties may differ in specifications.

Corporation registration for rental office tenants

Rental office tenants can register as corporations.



Extension telephones

Reception and the rental offices are connected by telephone.

Other

(24/365 *Excluding mandatory inspection days)



Keyless security using biometric authentication

Security systems use facial or fingerprint recognition.

*IC cards can also be used.



Remote control using IoT

Office HVAC and lighting can be controlled remotely and how crowded the shared lounges, restrooms and other common areas are can be visualized.



Healthy food service

Wellness-conscious breakfasts and lunches will be provided as needed.



Tenant interaction

Events for tenants to interact will be planned regularly.



Company nameplate display

You can display your company's name at the entrance.



Showers

*Not available at all properties.

Optional Services (not included in rental fee)

Shared Spaces/Common Areas



Meeting rooms

Meeting rooms are reserved in 15-minute increments

*Monitors and whiteboards are free.

1 person: 250 yen/15 min

4 people: 800 yen/15 min

6 people: 900 yen/15 min

8 people: 1,000 yen/15 min

10 people: 1,100 yen/15 min



Multifunction machines

Combination printer-copier-scanners are available for use.

B&W: 10 yen/sheet, color: 30 yen/sheet, scan: free



Tea service

Tea can be served to the meeting rooms (water, tea, coffee: 150 yen per bottle)

Private Spaces/Rental Offices



Optional furniture

Rental offices can be furnished with our designated furniture.

*Consult regarding fees.

Movable wall partitions

These can be removed to accommodate more people.

*Consult regarding fees.

Dedicated internet lines

Tenants can run LAN lines into their rental offices.

Corporation registration for joint tenants

One joint tenant per office; 10,000 yen per month to register.

*There is a screening process for joint tenants.

Other



Training services

New employee training, management training, etc. will be offered as needed.

*Taxes such as consumption tax are not included in the usage fees.

*Please note that services are subject to change.

T&Cs

Contract Terms and Conditions

Parties	Corporations and individuals
Type	Fixed-term building lease agreement
Period	24 months (terminable early with 3 months' notice)
Initial fee	Administrative fee: 1 months' fee
Monthly fee	Calculated by number of days from usage start date

*In principle, we ask tenants to sign a guarantor agreement with our designated guarantor (for a separate guarantor fee).

*Please consult regarding a deposit.

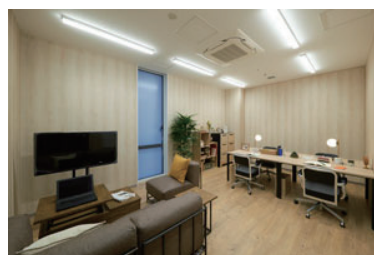
Recontract fee: 1 month's fee

Usage Fees



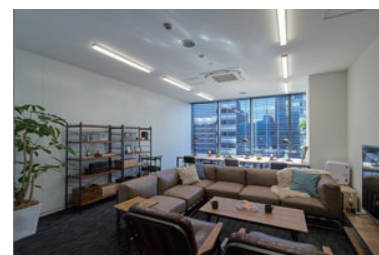
Max. registrants: 2

*Rates vary by property and office.
*All private offices, 24/7 access, biometric authentication security system and individual HVAC



Max. registrants: 8

*Rates vary by property and office.
*All private offices, 24/7 access, biometric authentication security system and individual HVAC



Max. registrants: 13

*Rates vary by property and office.
*All private offices, 24/7 access, biometric authentication security system and individual HVAC

- Max. registrants is the number allowed by the security system, not the number stipulated in the Office Hygiene Standards.

-Contact us for details of the sections and fees.

Contract Process

1

Reserve a visit

Please inform us of your preferred date to visit.

*Visits may be scheduled between 10:00 and 17:00 on weekdays.

By email

Contact us



We will respond between 9:00 and 17:40 excluding Saturdays, Sundays and holidays.

2

Apply

Please prepare the required documents and apply. We will evaluate your application and interview you.

*Please note that based on the evaluation, we may not be able to fulfill your preferences.

Required Documents

Applying as a corporation

- Application form
- Company overview (that explains your business and shareholder composition)
- Company seal registration certificate (no older than three months)
- Certificate of Full Registry Record (no older than three months)
- Copy of representative ID (photo ID such as driver's license, passport, etc.)
- Financial statement (two periods; detailed)

Applying as an individual

- Application form
- Copy of ID (photo ID such as driver's license, passport, etc.)
- Seal registration certificate (no older than three months)
- Certificate of Residence (no older than three months; domicile omitted)
- Resumé
- Income statement (Tax Certificate slip, Tax Payment Certification, etc.)

*In some cases, we may require additional documents.

We will notify you of the evaluation results a few days after you submit the required documents. If successful, the contract date and move-in date will be decided. The contract starts after we receive the initial payment.

Initial Fee

Administrative fee: 1 months' fee

Monthly fee: Calculated by number of days from usage start date

*In principle, we ask tenants to sign a guarantor agreement with our designated guarantor (for a separate guarantor fee).

*Please consult regarding a deposit.

*Please note that based on the evaluation, we may not be able to fulfill your preferences.

3

Sign contract and pay

4

Receive office and move in

Once the contract process is complete, you will receive a facility explanation and security registration and can begin using your office.

*The usage fees above do not include consumption tax, etc.

*Please note that services are subject to change.

Outline

Address	1-5-6 Jinnan, Shibuya Ward, Tokyo
Access	7-min walk from Shibuya (Exit A6; Tokyo Metro) 9-min walk from JR Shibuya (Hachiko Exit) 10-min walk from JR Harajuku (West Exit) 9-min walk from Meiji-jingumae (Exit 1; Tokyo Metro)
Landlord	Nomura Real Estate Development Co., Ltd.
Basic design	Nomura Real Estate First-Class Architect Office
Design/construction	Tokyu Construction
Interior design supervision	Park Corporation's space design brand parkERs (1,2, 8F lounges and rooftop terrace)
Completion	October 2020 (construction completed in August 2020)
Purpose	Office/retail
Structure/size/H¹O floors	Steel frame 10 floors above ground, 1 penthouse
No. of sections	50
Office sizes	11.26 m ² – 52.58 m ²
Floor wiring	-
Capacitance	6 or 10 kVA per section
HVAC	Air-cooled heat pump (individually controlled)
Lighting	LED lights (entrance and office floors)
Elevators	Standard: 2 (capacity: 11)
Optical cables	Led into rental offices
Security	Automated security (24 hours), biometric authentication on 1st floor and office entrances
Power supply	1-line supply/high-voltage supply
Shared equipment	Terrestrial digital, BS, CS (110°) available
Hours	24-hour access, no holidays (excluding mandatory inspection days)
Development style	Whole building, new

※Walking times are calculated assuming a pace of 80 meters per minute.

※Times are for regular daytime and do not include transfer or wait time. In addition, walking times are based on the distance from the station building or subway surface exit, not the ticket gates.

※This information is current as of July 2020.

CASBEE Wellness Office Evaluation Rank A

CASBEE Wellness Office is a tool to evaluate building specs, performance and measures to support maintenance and improvement of worker health and comfort. It rates not only elements that directly impact the health and comfort of those working in the building but also factors that help increase intellectual productivity as well as safety and security performance.

